

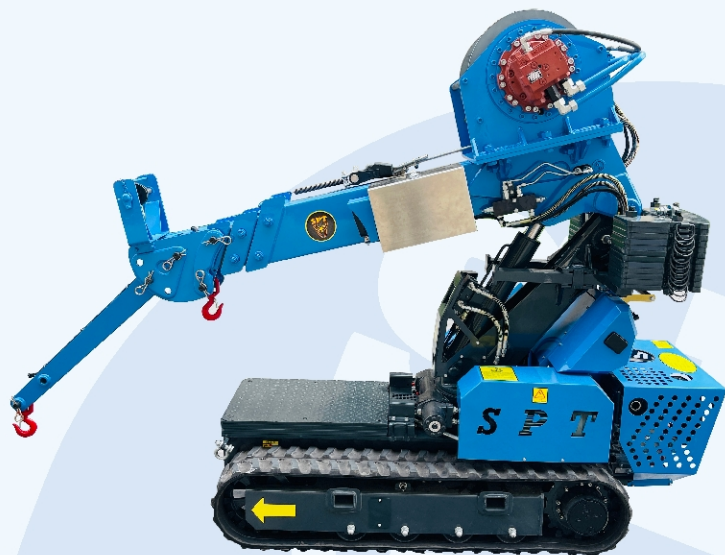
SG40



HENAN SPT MACHINERY
EQUIPMENT CO., LTD.

SG40 Pck and Carry Crane

SG40



Max lifting height 4.2m



Capacity 400kgX3m

50 meters' rope

Weight 1120kg



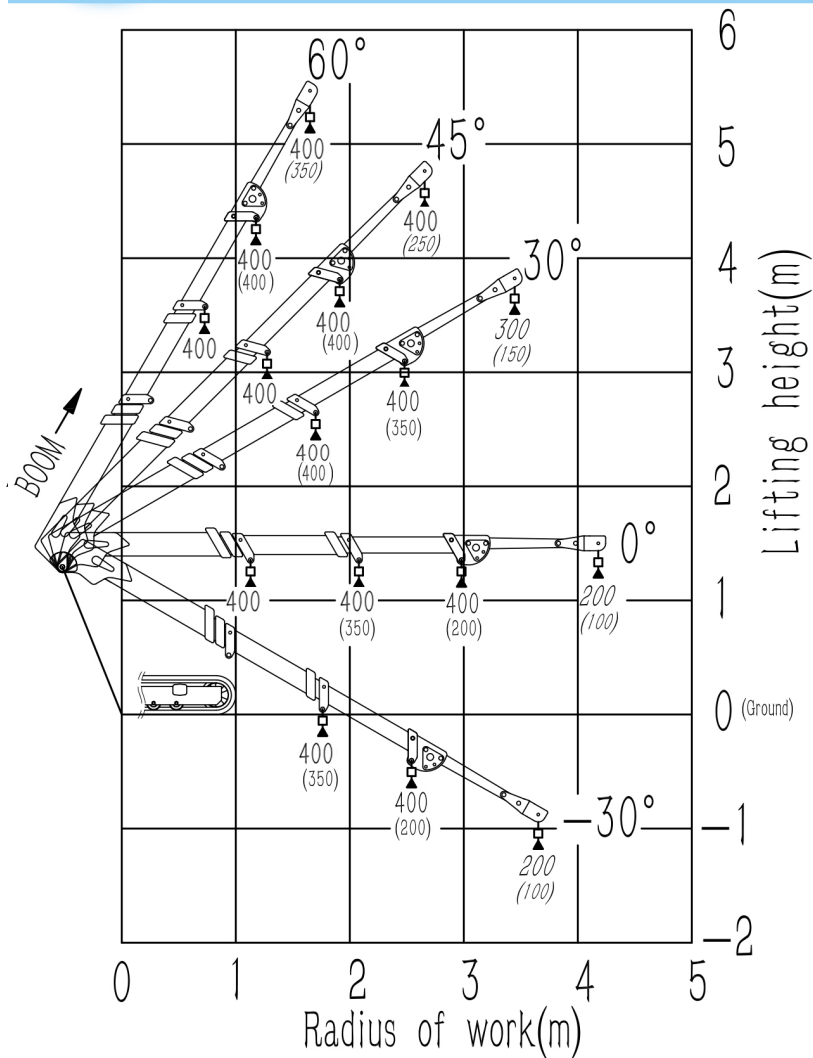
Working radius 3m

SG40



Working Range Diagram Fly Jib

SG40 Lifting Chart With Fly Jib Weight: kg



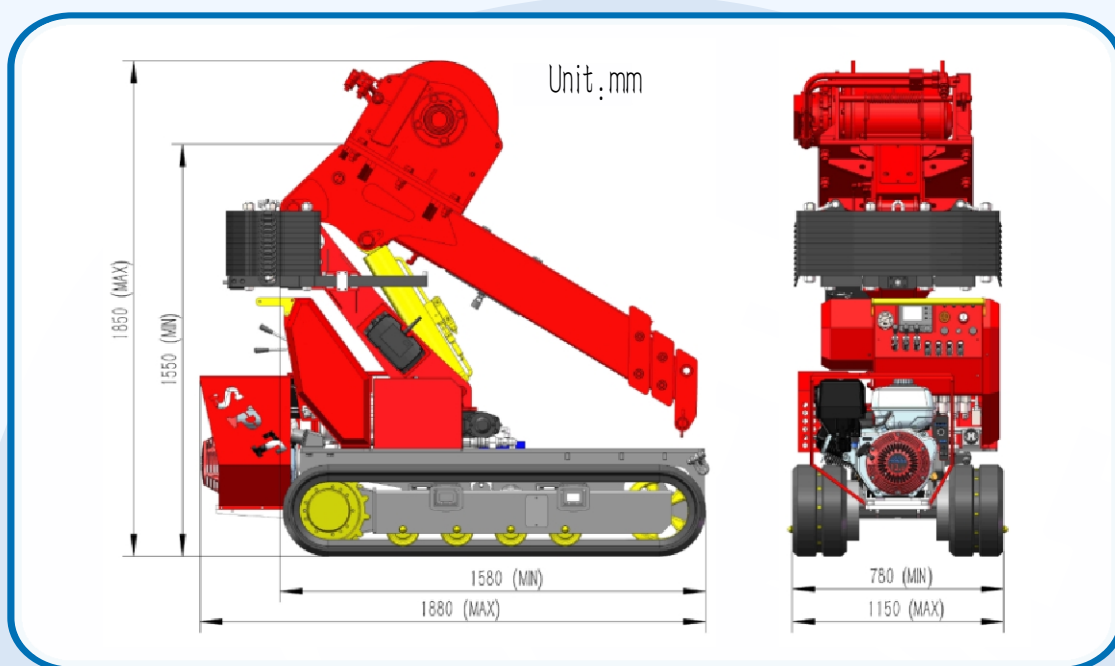
● Make sure the pavement is solid and flat

- Maximum position of counterweight
- () - without counterweight

SG40



Dimensions



Case



SG40



Specifications

Model	SG40	
Max Capacity	400kg X3m	
Working radius	3.0mx400kg	4.2mx200kg Fly jib
Ground lifting height	4.2mX400kg	5.0mx400kg Fly jib
Underground lifting height	50mX400kg	
Winch device	Hook speed	0–15m/min
	Rope type	Φ8mm × 50m
Telescopic system	Boom form	3 section boom, quadrilateral box construction
	Boom length/Time	1.65m–3.5m/15sec
Up and downs	Boom angle/Time	–30° – 60° /12sec
Slew system	Slew angle/Speed	–25° – 25° /16sec
Traction system	Walking way	Hydraulic motor drive, 2 speed
	Walking speed	0–1.2km/h
	Grade ability	15°
	Ground length × width	1225mm × 200 mm
	Ground pressure	23kpa 0.235kgf/cm ² /39kpa 0.395kgf/cm ²
Electric motor	Voltage	AC380V optional
	Power/Speed	3kw/1440 min–1
	Sound level	Rated speed ≤75dB A 1m
Gasoline engine	Model	GX390 HONDA
	Type/Displacement	single cylinder air cooling/0.389L
	Rated output	6.6kw/3600 min–1
	Starting method	Electric
	Operating temperature	–10° C~40° C
	Fuel/Volume	Gasoline/6L
	Battery capacity	12V 45AH
	Specific fuel consumption	0.3L/KW–h
	Sound Level	Rated speed ≤98dB A 7m
Operate system	Type of operation	Wireless remote control and manual operation
	Operating characteristic	Full proportional control and linkage control
Dimension	Length × Width × Height Min	1880mm × 780mm × 1550mm
	Length × Width × Height Max	1880mm × 1150mm × 1850mm
Weight	Minimum state	1120kg Excluding ballast and optional
	Maximum state	1945kg